



A576BL
CJA1HEA01AAA

Made and printed in China

Thank you for choosing **Alcatel**. This booklet helps you get started with your new **Alcatel Zip LTE**.

Important:

Restart your phone by pressing and holding the power key for more than 8 seconds until the startup screen appears.

In case this does not start your phone, press and hold the power key and volume up key together until the startup screen appears. From the following menus, short press the power key to select the language and then the “factory reset” option.

Note: This operation will erase personal settings and saved data.

For more information about how to use your **Alcatel Zip LTE**, go to www.alcatelonetouch.us for the complete user manual.



Table of contents

1	Your mobile	3	7	Multimedia applications	27
1.1	Keys and connectors.....	3	7.1	Camera/Camcorder.....	27
1.2	Getting started.....	4	7.2	Gallery.....	28
1.3	Home screen.....	5	7.3	Music.....	29
2	Text input	10	8	Others	30
2.1	Using Onscreen Keyboard.....	10	8.1	Files.....	30
2.2	Text editing.....	11	8.2	Sound Recorder.....	30
3	Phone call, Call log and Contacts	11	8.3	Radio.....	30
3.1	Call.....	11	8.4	Other applications.....	31
3.2	Call log.....	14	9	Google applications	31
3.3	Contacts.....	14	9.1	Play Store.....	31
4	Messaging, Gmail/Email	17	9.2	Chrome.....	31
4.1	Messaging.....	17	9.3	Gmail.....	32
4.2	Email.....	20	9.4	Maps.....	33
5	Calendar & Clock & Calculator	20	9.5	YouTube.....	33
5.1	Calendar.....	20	9.6	Drive.....	33
5.2	Clock.....	21	9.7	Play Music.....	33
5.3	Calculator.....	23	9.8	Play Movies & TV.....	33
6	Getting connected	24	9.9	Duo.....	33
6.1	Connecting to the Internet.....	24	9.10	Photos.....	33
6.2	Connecting to Bluetooth devices.....	25	10	Settings	34
6.3	Connecting to a computer.....	25	10.1	Suggestions.....	34
6.4	Sharing your phone's mobile data connection.....	26	10.2	Wireless & network.....	34
6.5	Connecting to virtual private networks.....	26	10.3	Device.....	35

10.4	Personal.....	37
10.5	System	40
	Safety and use	42



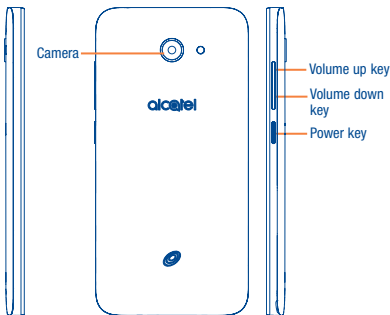
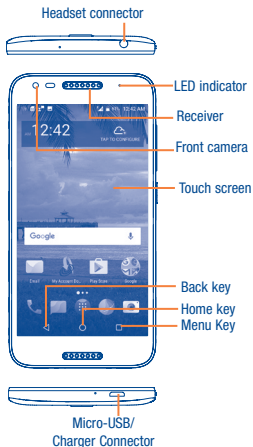
www.sar-tick.com

This product meets applicable national SAR limits of 1.6 W/kg. The specific maximum SAR values can be found on page 49 of this user guide.

When carrying the product or using it while worn on your body, either use an approved accessory such as a holster or otherwise maintain a distance of 15 mm from the body to ensure compliance with RF exposure requirements. Note that the product may be transmitting even if you are not making a phone call.

Your mobile

1.1 Keys and connectors



Back key

- Touch to go back to the previous screen, or to close a dialog box, options menu, the notification panel, etc.



Home key

- From any application or screen, touch to return to the Home screen.
- Long press to open Google now.



Menu Key

- Touch: Open a list of thumbnail images of apps you've worked with recently. Touch a thumbnail to open an app. Swipe horizontally to remove a thumbnail from the list.

Power key

- Press: Lock the screen/Light up the screen.
- Press and hold: Show the pop-up menu to select from Restart/Power off/Airplane mode.
- Press and hold the **Power** key for more than 8 seconds to reboot.
- Press the **Power** key and **Volume down** key to capture a screenshot.

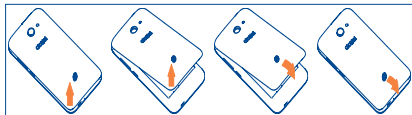
Volume Keys

- In call mode, adjusts the earpiece or headset volume.
- In Music/Video/Streaming mode, adjusts the media volume.
- In general mode, adjusts the ringtone volume.
- Mutes the ringtone of an incoming call.
- In camera mode, press **Volume up** or **down** key to take a photo.

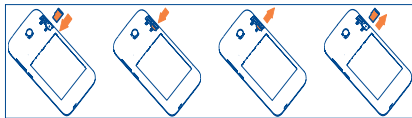
1.2 Getting started

1.2.1 Setup

Removing or installing the back cover



Removing or installing the microSD card

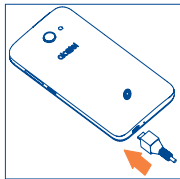



To install microSD card, place the microSD card with the chip facing downwards into the housing, and then slide it into its slot. To remove microSD card, press and slide it out.




To avoid data loss and SD card damage, before removing the SD card, ensure that the SD card is unmounted.

Charging the battery



It is advised that you fully charge your battery (). Connect the battery charger to your phone and main socket respectively, charging status is indicated by the percentage on screen while the phone is powered off. The percentage increases as the phone is charged.

- When using your telephone for the first time, you are advised to fully charge the battery  (approximately 3 hours).



To reduce power consumption and energy waste when the battery is fully charged, disconnect your charger from the plug; switch off Wi-Fi, GPS, Bluetooth or background-running applications when not in use; reduce the backlight time, etc.

Power on your phone

Hold down the **Power** key until the phone powers on, unlock your phone (Swipe, PIN, Password, Pattern) if necessary and confirm. The Home screen is displayed.

If you do not know your PIN code or if you have forgotten it, contact your service provider. Do not leave your PIN code with your phone. Store this information in a safe place when not in use.

Even if you have no network signal, your phone will still power on and you will be able to connect to a Wi-Fi network, (refer to section “6.1.2 Wi-Fi”), sign into your Google account and use some features.

1.2.2 Power off your phone

Hold down the **Power** key from any screen until the phone options appear, select **Power off**.

1.3 Home screen

You can bring all the items (applications, shortcuts, folders and widgets) you love or use most frequently to your Home screen for quick access. Touch the **Home** key to switch to the Home screen.



Status bar

- Status/Notification indicators
- Touch and drag down to open the notification panel.

Touch an icon to open an application, folder, etc.

Favorite tray applications

- Touch to enter the application.
- Long press to move or change applications.

Touch to enter application list.

The Home screen is provided in an extended format to allow more space for adding applications, shortcuts etc. Slide the Home screen horizontally to get a complete view.

1.3.1 Using the touchscreen

Touch



To access an application, touch it with your finger.

Touch and Hold



To enter the available options for an item, touch and hold the item. For example, select a contact in Contacts, touch and hold this contact, an options list will then appear on screen.

Drag



Place your finger on the screen to drag an object to another location.

Slide/Swipe



Slide the screen to scroll up and down the applications, images, and web pages at your convenience.

Flick



Flicking is similar to swiping, but makes movement faster.

Pinch/Spread



Place two fingers from one hand on to the screen's surface and draw them apart or together to scale an element on the screen.

Rotate



Automatically change the screen orientation from portrait to landscape by turning the device sideways to have a better view.






1.3.2 Status bar

From the status bar, you can view both phone status and notification information.

Status icons

	3G connected		Vibrate mode
	3G in use		Alarm is set
	4G connected		Connected to a Wi-Fi network
	4G in use		Speakerphone is on
	Signal strength		No SIM card inserted
	Roaming		Battery is charging
	No signal		Battery is very low
	Airplane mode		Battery is low
	Bluetooth is on		Battery is partially drained
	Headset connected		Battery is full
	GPS is on		

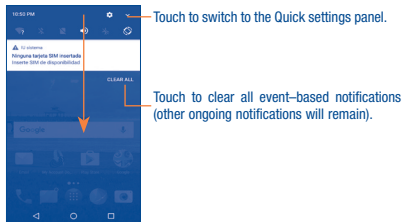
Notification icons

	New Gmail message		Missed call
	New Email message		Radio is on
	New text or multimedia message		An open Wi-Fi network is available
	Problem with SMS or MMS delivery		Uploading data
	Upcoming event		Downloading data
	Screenshot error		System update available
	Screenshot captured		

Touch and drag the Status bar down to open the Quick settings panel or Notification panel. Touch and drag up to close it. When there are notifications, you can touch them to access notifications directly.

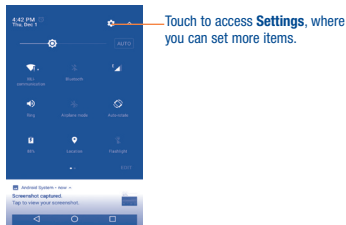
Notification panel

When there are notifications, touch and drag the Status bar down to open the Notification panel to read the detailed information.



Quick settings panel

Touch and drag Notification panel down to open Quick settings panel, where you can enable or disable functions or change modes by touching the icons.




1.3.3 Search bar


The phone provides a Search function which can be used to locate information within applications, the phone or the web.



1 Search by text

- Touch the Search bar from the Home screen.
- Enter the text/phrase you want to search for.
- Touch the  icon on the keyboard to complete your search.

2 Search by voice

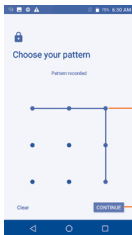
- Touch  from the Search bar to display a dialog screen.
- Speak the word/phrase you want to search for. A list of search results will display for you to select from.

1.3.4 Lock/Unlock your screen

To protect your phone and privacy, you can lock the phone screen by choosing swipe or creating a variety of patterns, PIN or password.

To create a screen unlock pattern

- Touch the Application tab from the Home screen, then touch **Settings/ Lock screen/Screen lock/Pattern.**
- Draw your own pattern.



To create a screen unlock PIN/Password

- Touch the Application tab from the Home screen, then touch **Settings/ Lock screen/ Screen lock/ PIN or Password.**
- Set your PIN or password.

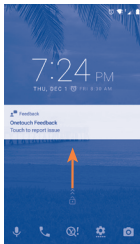
To lock phone screen

Press the **Power** key once to lock the screen.

To unlock phone screen

Press the power key once to light up the screen, draw the unlock pattern you have created or enter PIN or password, etc. to unlock the screen.

If you have chosen **Swipe** as the screen lock, you can press the **Power key** to light up the screen first, then slide up to unlock the screen; double touch the apps icon to enter the application.



1.3.5 Personalize your Home screen

Add

You can touch and hold a folder, an application or a widget to activate the Move mode, and drag the item to any Home screen as you prefer.

Reposition

Touch and hold the item to be repositioned to activate the Move mode, drag the item to the desired position and then release. You can move items both on the Home screen and the Favorite tray. Hold the icon on the left or right edge of the screen to drag the item to another Home screen.

Remove

Touch and hold the item you want removed in order to activate the Move mode, drag the item up to the top of the **Remove** icon, and release after the item turns red.

Create folders

To improve the organization of items (shortcuts or applications) on the Home screen and the Favorite tray, you can add them to a folder by stacking one item on top of another. To rename a folder, open the folder and long press the folder's title bar to input a new name.

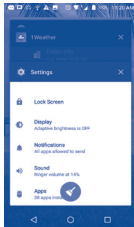
Wallpaper customization

Touch and hold the background on the Home screen then touch **WALLPAPERS** to customize wallpaper.

1.3.6 Recently-used applications

Consult recently-used applications

To consult recently-used applications, touch the **Menu** key from the Home screen. Touch a thumbnail in the window to open the related application.



Slide vertically to view all thumbnails of recently-used applications.

Touch one thumbnail and slide it horizontally or touch **X** to delete it.

Touch  to delete all thumbnails at once.

1.3.7 Volume adjustment

Using volume key

Press **Volume** key to adjust the volume. To active the vibrate mode, press the **Volume down** key until the phone vibrates.

Using Settings Menu

Touch the Application tab from the Home screen, then touch **Settings/Sound** to set the volume of media, ringtone, alarm, etc. to your preference.

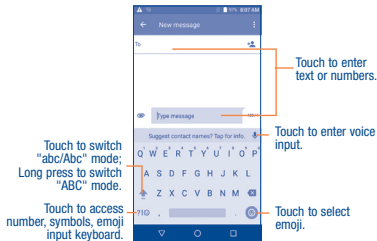
2 Text input

2.1 Using Onscreen Keyboard

Onscreen Keyboard settings

Touch the Application tab from the Home screen, select **Settings/Language & Input/Virtual keyboard**, touch the keyboard name to access a series of settings.

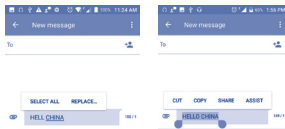
2.1.1 Google keyboard



2.2 Text editing

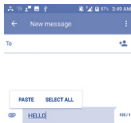
You can edit the text you have entered.

- Touch and hold or double tap the text you would like to edit.
- Drag the tabs to change the highlighted selection.
- The following options will show: **CUT**, **COPY**, **SHARE**, **SELECT ALL**, and **ASSIST**.
- Touch the other words that haven't been selected or an empty place in the entry bar to go back without any action.



You can also insert new texts as you prefer

- Touch where you want to type, or long press a blank space. The cursor will blink and the tab will show. Drag the tab to move the cursor.
- If you have selected any text, touch the tab to show **PASTE** and **SELECT ALL** which allows you to complete paste immediately.




3 Phone call, Call log and Contacts

3.1 Call



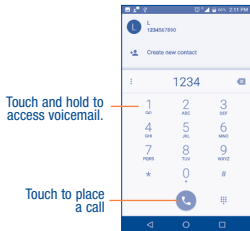
3.1.1 Placing a call

You can easily launch a call using **Call**. Touch the Application tab from the Home screen and select **Call**, or touch the  icon on the home screen to access **Call** application.




Slide right to access **Favorites**; slide left to access **Contacts**.

Touch to hide keyboard



Touch and hold to access voicemail.

Touch to place a call

Enter the desired number from the keyboard directly or select a contact from **Contacts** or **Call log** by sliding or touching tabs, then touch  to place the call.

The number you entered can be saved to **Contacts** by touching the **Create new contact**.


If you make a mistake, you can delete the incorrect digits by touching .

To hang up a call, touch  or the **Power** key (when the **Settings/Accessibility/Power button to ends call** option is activated).

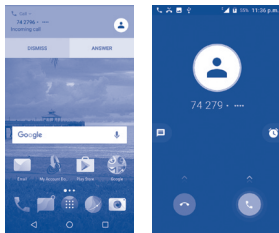
International call

To dial an international call, long press  to enter "+", then enter the international country prefix followed by the full phone number and finally touch .





Emergency call

If your phone has network coverage, dial emergency number and touch  to make an emergency call. This works even without network signal and without typing the PIN code.

3.1.2 Answering or rejecting a call



When you receive a call, you can touch **DISMISS** to reject the call or touch **ANSWER** to connect the call. For more, touch the incoming call then:

- Slide the  icon up to answer;
- Slide the  icon up to reject;
- Touch the  icon to reject the call by sending a preset message.
- Touch the  icon to reject the call with a reminder.

To mute the ringtone volume of an incoming call, press the **Volume up/down** key or turn the phone over (when the **Settings/Gesture/Turn over to mute** option is set to On by default).

3.1.3 Calling your voicemail

Your voicemail is provided by your network to avoid missing calls. It works like an answering machine that you can consult at any time.

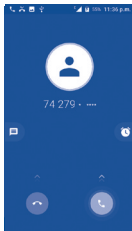
To access your voicemail, long press  from dial screen.

To set your voicemail number, touch  from the Dial screen, then touch **Settings/Call settings/Voicemail/Setup/Voicemail number**.

If you receive a voicemail, a voicemail icon  appears on the Status bar. Open the Notification panel, touch **New voicemail**.

3.1.4 During a call

To adjust the volume during a call, press the **Volume up/down** key.



Touch to end the current call.



Touch to display dial pad.



Touch to activate the speaker during the current call. Touch this icon again to deactivate the speaker.



Touch to mute the current call. Touch this icon again to unmute the call.



Touch to add a call.



Touch to hold a call.



Touch to view the contact list and details.



To avoid incorrect operations on the touchscreen during a call, the screen will automatically lock and unlock once the cellphone is placed and removed from your ear.

3.1.5 Call settings

Touch the  from dial screen, then touch **Settings**, the following options are available:

Phone settings

Sounds and vibrate

- **Phone ringtone:** Touch to select phone ringtone.
- **Also vibrate for calls:** Mark the checkbox to vibrate when ringing.
- **Dial pad tones:** Mark the checkbox to enable playing tones when using the dial pad.

Quick responses

Touch to edit quick responses which will be used when you reject a call with a message.

Call settings

Calling accounts

- **SIP accounts:** Touch to add and manage SIP (Session Initiation Protocol) accounts.
- **Use SIP calling:** Touch to setup when to use SIP calling, use for all calls or only for SIP calls.
- **Receive incoming calls:** Mark the checkbox to enable receive incoming calls.

Voicemail

- **Service:** Touch to select the carrier.
- **Setup:** Touch to set voicemail number for listening to and managing your voicemail.
- **Sound:** Touch to select notification sound.
- **Vibrate:** Mark the checkbox to vibrate when you have a new voicemail.

Fixed Dialing Numbers

Fixed dialing number (FDN) is a SIM service mode, where outgoing calls are restricted to a set of phone numbers. These numbers are added to the FDN list. The most common practical application of FDN is for parents to restrict the phone numbers to which their children can dial. For security reasons, you'll be prompted to enable FDN by entering SIM PIN2 which is usually acquired from your service provider or SIM maker.

GSM call settings

- **Call forwarding:** Touch to configure how your calls are forwarded when you are busy, unanswered or unreachable.
- **Additional settings:** Mark the check to enable notification of incoming calls when during a call.
- **Call barring:** Touch to enter call barring setup.

Accessibility

TTY mode

TTY mode enables people who are deaf, hard of hearing, or speech-impaired to use the telephone to communicate. After connecting the phone and TTY devices that includes a keyboard and a text display mechanism, calls are linked to a relay service, which converts incoming speech to text and converts outgoing text to a spoken voice.

Hearing aids

Mark the checkbox to enable hearing aid compatibility.

Contact settings

Manage Accounts

Touch to enter manage accounts, you can add, remove, and setup your Google and other supported accounts.

Display options

- **Sort by:** To set the contacts display by First name or Last name.
- **Name format:** To set the name format by First name first or Last name first.

3.2 Call log

You can access your call memory by touching **RECENT** from the Dial screen.

Touch a contact or number to view information or further operations. You can launch a new call, send SMS to the contact or number, view detailed information of the call, or clear the call.

Touch **Call history** to view all call log, touch  and **Clear call history** to clear the entire call memory.



3.3 Contacts

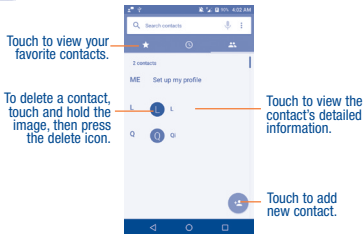
Contacts enables quick and easy access to the people you want to reach.


You can view and create contacts on your phone and synchronize these with your Gmail contacts or other applications on the web or on your phone.

3.3.1 Consult your Contacts

To access this feature:

- Touch  from the Home screen, then touch .
- Touch the Application tab from the Home screen, then select **Contacts**



Touch the  to display contacts list option menu, following actions are enabled:

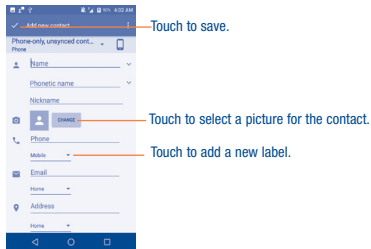
- **Group** Touch to add and manage contact group.
- **Contact to display** Touch to choose contacts to display.
- **Import/Export** Import or export contacts between phone storage and microSD card, or share contacts.
- **Block number** Touch to manage the block numbers, you won't receive calls or texts from blocked numbers.
- **Merge contacts** Touch to merge the duplicate contacts.

- **Settings** Touch to change the display of the sort list and contact names.

3.3.2 Adding a contact

Touch the  icon in the contact list to create a new contact.

You are required to enter the contact's name and other contact information. By scrolling up and down the screen, you can easily move from one field to another.




If you want to add more information, touch **More** to add a new category.

When finished, touch  to save.

To exit without saving, you can touch  and then touch **Discard changes**.

Add to/remove from Favorites ⁽¹⁾

To add a contact to favorites, you can touch a contact to view details then touch .

To remove a contact from favorites, touch the star  on contact details screen.


3.3.3 Editing your contacts

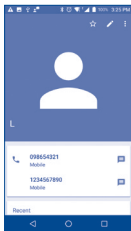
To edit contact information, touch  in the contact details screen. When finished, touch .

3.3.4 Communicating with your contacts

From the contacts list, you can communicate with your contacts by making a call or exchanging messages.

To launch a call to a contact, touch the contact to enter the detail screen, then touch the number.

To send a message to a contact, touch the contact to enter the detail screen, then touch the  icon on the right side of the number.



⁽¹⁾ Only phone contacts can be added to Favorites.

The icons available on Quick Contact panel depend on the information you have for the contact and the applications and accounts on your phone.

3.3.5 Contacts importing, exporting and sharing




This phone enables you to import or export contacts between microSD card and phone storage.

From the Contacts screen, touch the  icon to open the options menu, touch **Import/Export**, then select the location to copy contacts from, touch **NEXT**, then select the location to copy contacts to, touch **NEXT**.


To import/export a single contact, select the contact you want to import/export, and touch the  icon to confirm.


To import/export all contacts, touch the icon  and then the  icon to confirm.

You can share a single contact or contacts with others by sending the contact's vCard to them via Bluetooth, Gmail, etc.

Touch a contact you want to share, long press the Menu icon  and Share from the contact details screen, choose a phone number or touch  if there are more than one number, then touch  and select the application to perform this action.

3.3.6 Displaying contacts


You can configure which group of contacts, for each account, you want to display in the Contacts list. Touch  and touch **Contacts to display** from contacts list screen, then you can choose contacts to display.

Touch  and **Settings**, sort the list by first name or last name, as well as view contact names as first/last name first.

3.3.7 Joining/Separating contacts⁽¹⁾


To avoid duplication, you can add any new contact information to existing contacts in a single action.

Touch  and touch **Merge contacts** from contacts list screen, then you can merge duplicate contacts.

Touch  from the duplicate contact list screen, the contacts will merge automatically.


3.3.8 Accounts

Contacts, data or other information can be synchronized from multiple accounts, depending on the applications installed on your phone.


To add an account, touch  from the contacts list and touch **Settings/Manage Accounts/Add account**, or from the Home screen, touch the Application tab then **Settings/Accounts/Add account**.

You are required to select the kind of account you are adding, like Google, Corporate, etc.

As with other account setups, you need to enter detailed information, like username, password, etc.

You can remove or delete an account and all associated information from your phone. Open the **Settings** screen, touch the account you want to delete, touch  and select **Remove account**, then confirm.

Turn on/off the sync & Auto-sync

In the **Accounts** screen, touch  and mark the **Auto-sync data** checkbox. When activated, all changes to information on the phone or online will be automatically synchronized with each other.

⁽¹⁾ Only applicable for phone/account contacts.

4 Messaging, Gmail/Email

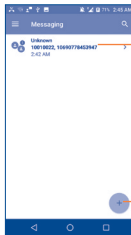
4.1 Messaging.....

You can create, edit and receive SMS and MMS with this mobile phone.

To access this feature, touch the Application tab from the Home screen, then select **Messaging**.

4.1.1 Write message

On the message list screen, touch the new message icon  to write text/multimedia messages.





- Touch to view the whole message thread.
- Touch and hold to activate delete mode.

Touch to create a new message.



For saved contacts, touch the photo to open the Quick Contact panel to communicate with the contact. For unsaved contacts, touch the photo to add the number to your **Contacts**.

Sending a text message

Enter the mobile phone number of the recipient in the **To** bar or touch  to add recipients and touch the **Type message** bar to enter the text of the message. When finished, touch  to send the text message.





An SMS of more than 160 characters will be charged as several SMS. A counter will be on the right of the text box to remind you how many characters are allowed to be entered in one message. Specific letters (accent) will also increase the size of the SMS, this may cause multiple SMS to be sent to your recipient.

Sending a multimedia message

MMS enables you to send video clips, images, photos, animations, slides and sounds to other compatible mobiles and e-mail addresses.

An SMS will be converted to MMS automatically when media files (image, video, audio, etc.) are attached or subject or email addresses are added.

To send a multimedia message, enter the recipient's phone number in the **To** bar, touch **Type message** bar to enter the text of the message. Touch the  icon to attach photo, video, audio and so on. When finished, touch  to send the multimedia message.

Attach options:



Touch to choose an animated emoji as an attachment.



Access **Camera** to capture a new picture for attachment.



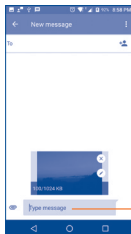
Access **Gallery** application or **Files** to select a picture as an attachment.



Enter **Sound Recorder** to record a voice message for attachment.




Enter **Contacts** to select a contact or contacts as an attachment.



Touch to edit the title of this slide.

4.1.2 Manage messages

When receiving a message, an icon  will appear on status bar as a notification. Drag the Status bar down to open the Notification panel, touch the new message to open and read it. You can also access the Messaging application and touch the message to open. Messages are displayed in conversational order.

To reply to a message, touch the current message, enter the text, then touch .

Long press an SMS in message details screen. The following message options are available for selection:




This option displays when the message is an SMS. Copy the current message content. You can paste it to the enter bar of the new message you are going to compose.



Touch to forward the message to another recipient.



Touch to view details of the message.

-  Delete the current message.
- **Lock message** Touch to lock/unlock the message so it can't/can be deleted if you reach maximum number of stored messages.
- **Save message to SIM card** Touch to save a message to the SIM card.
- **Report as Spam** Report the message as Spam for further investigation.

4.1.3 Adjust message settings

You can adjust a set of message settings. From Messaging application screen, touch  and touch **Settings**.

- **SMS enabled** Touch to change your default SMS app.
- **Quick text** Touch to add or edit quick text.

STORAGE

- **Delete old messages** Select to delete old messages when the maximum number of stored messages is reached.
- **Text message limit** Touch to set the number of text messages to be saved per conversation.
- **Multimedia message limit** Touch to set the number of multimedia messages to be saved per conversation.

Notification

- **Notifications** Mark the checkbox to display message notifications in the status bar.
- **Select ringtone** Touch to select a ringtone as a new message notification tone.

- **Vibrate** Touch to activate vibrate mode as a notification when receiving a new message.
- **Beep when on an active call** Mark the checkbox to have the phone beep when a new message is received on an active call.

WAP message settings

- **WAP message enable** Mark the checkbox to enable receive of push messages from network.

Cell broadcast settings

- **Cell broadcast** Mark the checkbox to enable receipt of cell broadcast messages.
- **Select CB ringtone** Touch to select CB ringtone when device receives cell broadcast messages.
- **Enable LED indicator** Mark the checkbox to enable CB LED indicator.
- **Enable light up screen** Mark the checkbox to light up the screen when receiving cell broadcast.
- **Vibrate** Touch to activate vibrate mode as a notification when receiving a new cell broadcast.
- **Cell broadcast settings** Touch to set broadcast channel.
- **Emergency alerts** Touch to enter emergency alerts settings, include whether to show threats and alert tone.

Text message (SMS) Settings

- **Manage SIM message** Touch to manage SMS saved in SIM card.
- **SMS Service Center** Touch to edit or view the service center number.
- **Character code** Touch to set SMS character code.

- **SMS signature** Mark the checkbox to enable signature.
- **Edit SMS signature** Touch to edit SMS signature.

Multimedia message (MMS) Settings

- **Group messaging** Touch to send a single message by MMS when there are multiple recipients.
- **Auto-retrieve** Mark the checkbox to retrieve messages automatically.
- **Creation mode** Select to change creation mode.
- **Maximum message size** Select to input the maximum message size.

4.2 Email

The first time you set up your phone, you can select to use an existing Gmail or to create a new Email account.



4.2.1 Email

Besides your Gmail account, you can also set up external POP3, IMAP or Exchange email accounts on your phone.






To access this feature, touch the Application tab from the Home screen, then select **Email**.

An email wizard will guide you through the steps to set up an email account.

- Enter the email address and password of the account you want to set up.
- Touch **NEXT**. If the account you entered is not provided by your service provider in the phone, you will be prompted to go to the email account settings screen to enter settings manually. Alternatively, you can touch **MANUAL SETUP** to directly enter the incoming and outgoing settings for the email account you are setting up.

- Enter the account name and display name in the outgoing emails.
- To add another email account, you can touch  and **Settings**. Touch  **Add account** to create an account.

To create and send emails

- Touch the  icon from the Inbox screen.
- Enter recipient(s) email address(es) in the **To** field.
- If necessary, touch the  icon beside the **To** field to add Cc/Bcc to add a copy or a blind carbon copy to the message.
- Enter the subject and the content of the message.
- Touch  to add an attachment.
- If you do not want to send the email right away, you can touch  and **Save draft** or touch the **Back** key to save a copy.
- Finally, touch  to send.




5 Calendar & Clock & Calculator

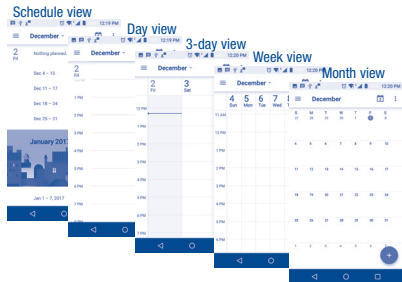
5.1 Calendar

Use Calendar to keep track of important meetings, appointments, etc.

To check the calendar, touch the Application tab from the Home screen, then touch **Calendar**.


5.1.1 Multimode view

To change your Calendar view, touch the  icon besides the month title to open the month view, or touch  and select **Schedule**, **Day**, **3-Day**, **Week** or **Month** to open different views. Touch the  ⁽¹⁾ icon to return to Today's view.



5.1.2 To create new events


You can add new events from any Calendar view.

- Touch the  icon to access the new event edit screen.
- Fill in required information for this new event. If it is a whole-day event, you can select **ALL DAY**.
- Invite people to the event. Enter the email addresses of the guests and separate with commas. Then all guests will receive an invitation from Calendar and Email.
- When finished, touch or **SAVE** from the top of the screen.


⁽¹⁾ The number indicates the date.

- Before you can add an event, you must add at least one Calendar account and make the calendar visible.

5.1.3 To delete or edit an event

Touch an event to open its detailed screen, then touch  and then touch **DELETE** to delete.

5.1.4 Event reminder

If a reminder is set for an event, the upcoming event icon  will appear on the Status bar as a notification when the reminder time arrives.

Touch and drag the Status bar down to open the notification panel, then touch an event name to view the Calendar notification list.

Touch the Back key to keep the reminders pending in the status bar and the notification panel.

5.2 Clock




Your mobile phone has a built-in clock.

To open Clock, touch the Application tab from the Home screen, then touch **Clock**.


5.2.1 Alarm

To set an alarm

From the **Clock** screen, touch  to enter the **Alarms** screen, then touch  to add a new alarm. Following options will show:

- **Time** Touch numbers to set the time for your alarm.
- **Repeat** Mark the checkbox of Repeat and then select the days you want your alarm to go off.
- **Ringtone** Select an alarm ringtone.
- **Vibrate** Mark the checkbox to activate/deactivate vibration.
- **Label** Touch to set a name for the alarm.
- **Delete** Touch  to delete the alarm.

To adjust alarm settings

Touch  and select **Settings** from the Alarms screen. The following options will be available:

Clock

- **Style** Touch to set **Analog** or **Digital** style.
- **Automatic home clock** Will automatically add a home clock while traveling outside. To disable it, unmark the checkbox.
- **Home time zone** Touch to set Home time zone.
- **Change date & time** Touch to set up date and time.

Alarms

- **Silence after** Select a silence time.
- **Snooze duration** Touch to choose length of snooze.
- **Alarm volume** Touch to set alarm volume.

- **Gradually increase volume** Volume of the ringtone will gradually increase after the timer is set.
- **Volume key** Preset volume up/down keys' behavior when alarm sounds: Snooze, Dismiss, or Do nothing.
- **Default alarm tone** Touch to choose ringtone or music for default alarm tone.
- **Shake action** Shake the phone when the alarm sounds to snooze, dismiss or to do nothing.
- **Start week on** Select to start week on Saturday, Sunday, or Monday.

Timer

- **Timer ringtone** Touch to select a timer ringtone.
- **Gradually increase volume** Volume of the ringtone will gradually increase after the timer is set.

5.2.2 World clock

To view the world clock, touch  on the Clock screen.

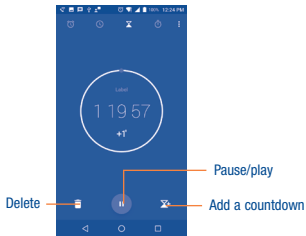
- Touch  to add a time zone from the list.

5.2.3 Countdown

From the **Clock** screen, touch  to enter the **Countdown** screen.

Touch the digits to set the countdown time. Type the time in hours, minutes, and seconds.

Touch  to start the countdown.



5.2.4 Timer

From the **Time** screen, touch to enter the **Timer** screen.

Touch to start the timer.

Show a list of records according to the updated time: Touch .

Pause: Touch .

Share the timer through Bluetooth, Gmail, etc.: Touch .

Delete the recorded times: Touch .

5.3 Calculator.....

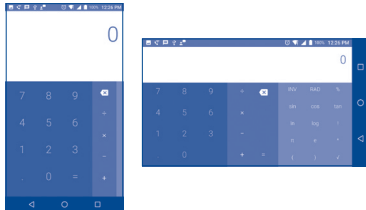


To solve mathematical problems with **Calculator**, touch the Application tab from the Home screen, then touch **Calculator**.

There are two panels available: Basic calculation and Scientific calculation.

To switch between panels, select one of the following two ways:

- Swipe the basic calculation screen to the left to open the scientific calculation.
- Or turn the device to the landscape mode from the basic panel to open the scientific calculation. This option is only available if **Settings / Display / Auto-rotate screen / Rotate screen contents** is on.



Enter a number and the arithmetic operation to be performed, enter the second number, then touch "=" to display the result. Touch to delete digits one by one, or long press to delete all at once.

6 Getting connected

To connect to the internet with this phone, you can use 4G network or Wi-Fi, whichever is more convenient.

6.1 Connecting to the Internet

6.1.1 4G

The first time you turn on your phone with network signal, it will automatically configure your network service: 4G.

To activate/deactivate Data roaming

When roaming, you can decide to connect/disconnect to a data service.


- Touch the Application tab from the Home screen.
- Touch **Settings/More.../Cellular networks**.
- Select **Data roaming** to set roaming mode.
- When Data roaming is disabled, you can still perform data exchange with a Wi-Fi connection (refer to “6.1.2 Wi-Fi”).

6.1.2 Wi-Fi

Using Wi-Fi, you can connect to the Internet when your phone is within range of a wireless network. Wi-Fi can be used on your phone even without network signal.


To turn Wi-Fi on and connect to a wireless network

- Touch the Application tab from the Home screen, then select **Settings/Wi-Fi**.

- Touch the switch  beside Wi-Fi to turn on/off Wi-Fi.
- Touch **Wi-Fi**, then the detailed information of Wi-Fi networks will display in the network section.
- Touch a Wi-Fi network to connect. If the network you selected is secured, you are required to enter a password or other credentials (you may contact the network carrier for details). When finished, touch **CONNECT**.


To activate notification when a new network is detected

When Wi-Fi is on and the phone detects an available network within range, a Wi-Fi icon will appear on the status bar. The following steps activate the notification function when Wi-Fi is on:

- Touch the Application tab from the Home screen and **Settings**.
- Touch **Wi-Fi**, then touch  and **Advanced** from Wi-Fi screen.
- Mark/Unmark the **Network notification** checkbox to activate/deactivate this function.

To add a Wi-Fi network

When Wi-Fi is on, you may add new Wi-Fi networks according to your preference.

- Touch the Application tab from the Home screen and **Settings**.
- Touch **Wi-Fi**, then touch  **Add network** at the bottom of Wi-Fi screen.
- Enter the network SSID and required network information.
- Touch **SAVE**.

When successfully connected, your phone will be connected automatically the next time you are within range of this network.

To forget a Wi-Fi network

The following steps prevent automatic connections to networks which you no longer wish to use.

- Turn on Wi-Fi, if it's not already on.

- In the Wi-Fi screen, touch & hold the name of the saved network.
- Touch **FORGET** in the dialog that opens.

6.2 Connecting to Bluetooth devices ⁽¹⁾

Bluetooth is a short-range wireless communication technology that you can use to exchange data, or connect to other Bluetooth devices for various uses.

To access this function, Touch the Application tab from the Home screen, then touch **Settings/Bluetooth**, your advice and other available ones will show on the screen.

To turn on Bluetooth

- Touch the Application tab from the Home screen, then touch **Settings**.
- Touch **Bluetooth**, touch  to activate/deactivate this function.


To make your phone more recognizable, you can change your phone name which is visible to others.

- Touch the Application tab from the Home screen,
- Touch **Settings/Bluetooth**.
- Touch  and **Rename this device**.
- Enter a name, and touch **RENAME** to confirm.

To pair/connect your phone with a Bluetooth device

To exchange data with another device, you need to turn Bluetooth on and pair your phone with the Bluetooth device with which you want to exchange data.

⁽¹⁾ You are recommended to use **Alcatel** Bluetooth headsets, which have been tested and proved compatible with phone. You can go to www.alcatelonetouch.us for more information about **Alcatel** Bluetooth headsets.

- Touch the Application tab from the Home screen.
- Touch **Settings/Bluetooth**.
- Touch  and touch **Refresh**.
- Touch a Bluetooth device you want to be paired with in the list.
- A dialog will pop up, touch **PAIR** to confirm.
- If the pairing is successful, your phone connects to the device.

To disconnect/unpair from a Bluetooth device

- Touch the Settings icon  beside the device you want to unpair.
- Touch **FORGET** to confirm.

6.3 Connecting to a computer

With a USB cable, you can transfer media files and other files between your microSD card/internal storage and the computer.

To connect/disconnect your phone to the computer:

To connect:

- Use a cable to connect the phone to a USB port on your computer. You will receive a notification that the USB is connected.
- Touch the notice to change connect mode, such as **Charge this device**, **Transfer files(MTP)**, **Transfer photos(PTP)**, **Drivers CD-ROM**.



Before using MTP, make sure that the driver (Windows Media Player 11 or higher version) has been installed.

To locate the data you have transferred or downloaded in the internal storage, touch **Files**. All data you have downloaded is stored in **Files**, where you can view media files (videos, photos, music and others), rename files, install applications onto your phone, etc.

6.4 Sharing your phone's mobile data connection

You can share your phone's mobile data connection with a single computer via a USB cable (USB tethering) or with up to eight devices at once by turning your phone into a portable Wi-Fi hotspot.



The functions below may incur additional network charges from your network carrier. Extra fees may also be charged in roaming areas.

To share your phone's data connection via USB

Use a USB cable to connect the phone to a USB port on your computer.

- Touch **Settings/More.../Tethering & Mobile hotspot**.
- Touch the switch beside **USB tethering** to activate/deactivate this function.

To share your phone's data connection as a portable Wi-Fi hotspot

- Touch **Settings/More.../Tethering & Mobile hotspot**.
- Touch the switch beside **Portable Wi-Fi hotspot** to activate/deactivate this function.

To rename or secure your portable hotspot


When a Portable Wi-Fi hotspot is activated, you can change the name of your phone's Wi-Fi network (SSID) and secure its Wi-Fi network.

- Touch **Settings/More.../Tethering & Mobile Hotspot**.
- Touch **Set up Wi-Fi Hotspot** to change the network SSID or set your network security.
- Touch **SAVE**.

6.5 Connecting to virtual private networks

Virtual private networks (VPNs) allow you to connect to the resources inside a secured local network from outside that network. VPNs are commonly deployed by corporations, schools, and other institutions so that their users can access local network resources when not inside that network, or when connected to a wireless network.

To add a VPN

- Touch **Settings/More.../VPN** and then touch .
- In the screen that opens, follow the instructions from your network administrator to configure each component of the VPN settings.
- Touch **SAVE**.

The VPN is added to the list on the VPN settings screen.



Before adding a VPN, you should set a PIN code or password for your phone.

To connect/disconnect VPN

To connect to a VPN:

- Touch **Settings/More.../VPN**.
- VPNs you have added are listed; touch the VPN you want to connect with.
- In the dialog that opens, enter any requested credentials and touch **CONNECT**.

To disconnect:

- Touch a connected VPN, then select **Disconnect**.

To edit/delete a VPN

To edit a VPN:

- Touch **Settings/More.../VPN**.
- VPNs you have added are listed; touch  and touch **Edit profile** to edit.
- After editing, touch **SAVE**.

To delete:

- Touch  and touch **Delete profile**.

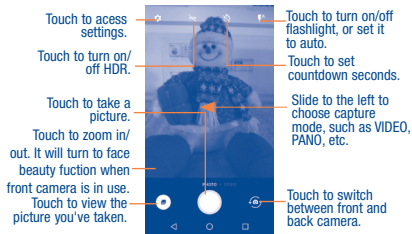
7 Multimedia applications

7.1 Camera/Camcorder.....


Your mobile phone is fitted with a Camera and a Camcorder for taking photos and shooting videos.

Before using the Camera or Camcorder, be sure to remove the protective lens cover to avoid it from affecting your picture quality.

To capture a picture or take a video, touch the Application tab from the Home screen and then touch **Camera**.



To take a picture

The screen acts as the viewfinder. First position the object or landscape in the viewfinder, touch the screen to focus if necessary, touch the  icon to take the picture which will be automatically saved.


To shoot a video

Slide the screen to the left to enter Video mode. First position the object or landscape in the viewfinder, and touch the  icon to start recording. Touch the icon again to stop recording. The video will be automatically saved. While recording a video, touch  to capture a picture, touch  to pause.

7.1.1 Shooting mode

Before taking a photo/shooting a video, slide the camera screen to the left to choose shooting mode.

Back camera shooting mode

- **Pano** Turn on the panorama function. Touch the shutter button to start taking a panoramic photo and move the phone steadily along the direction indicated by the onscreen line. Once the preview frame is filled, the phone will automatically save the photo.
- **TIME-LAPSE** Time-lapse is a technique whereby the frequency at which video frames are captured (the frame rate) is much lower than that used to view the sequence. When played at normal speed, time appears to be moving faster and thus lapsing. It can be considered the opposite of high speed photography or slow motion.
- **INSTANT COLLAGE** In Instant collage mode, you can take and collage 4 pictures at most to one picture. Touch  to choose how to collages pictures.

7.1.2 Settings

Before taking a photo/shooting a video, touch  to adjust a number of settings in framing mode.


Photo

- **Size** Touch to select picture size.

Video

- **Video quality** Touch to select video progressive scan output and definition.

General

- **Grid** Switch the toggle to enable/disable grid view. It divides the screen into equal parts and helps you take better photos by making it simple to align compositional elements to the grid.
- **Volume button function** Touch to set volume button function in camera mode.
- **Media storage** Touch to set up default storage location of pictures and videos captured.
- **Save location information** Touch to turn on/off save location information when taking a picture.
- **Shutter sound** Switch the toggle to enable/disable shutter sound when taking a photo.
- **Anti Banding** Touch to set up the banding in order to adapt different light frequencies.
- **Zoom button** Switch the toggle to enable display zoom button  on camera screen.
- **Reset settings** Touch to reset settings to default.

7.2 Gallery



Gallery acts as a media player for you to view photos and playback videos. In addition, a set of further operations to pictures and videos are available for your choice.

To open your Gallery, touch the Application tab from the Home screen, then touch **Gallery**.



- Touch to access more options, such as Select items, Slideshow, etc.
- Touch to open camera.

• Scroll up to view more pictures and videos.



- Touch to access Select albums, Sort albums, and settings.

• Touch to create album.

• Scroll up to view more albums.

To view a picture/play a video

Pictures and videos are displayed by moments and albums in **Gallery**.

- All pictures and videos are divided by moments, and by albums. Touch an album to view pictures and videos spread on the screen.
- Touch the picture/video directly to view or play.
- Slide up/down to view previous or next pictures/videos.


Working with pictures

Gallery provides a multi-select function, so that you can work with pictures/videos in batches.

You can touch one album, then slide up to view the pictures.

Touch a picture you want to work on, then, touch the  icon to delete selected photos. Touch  to share selected ones.

Touch  and select **Set as...** to set the picture as Contact photo, or Wallpaper

Touch  from full-screen picture view, more options will display for you to choose from.

Touch  to set picture to **Favorites**, then the picture can be found in the **Favorites** album. Touch again to remove from **Favorites**.

7.3 Music.....

You can play music files stored on your phone or microSD card. Music files can be downloaded from your computer to the phone or microSD card using a USB cable.

To play your music, touch **Music** from the Home screen.

You will find five categories in which all songs are classified: **SONGS, ALBUMS, ARTISTS, PLAYLISTS, GENRES**. Touch their tabs to open the lists.

7.3.1 Playing music

Touch a song to play it.



- 1 Hide the play screen.
- 2 Open the playing list.
- 3 Open options menu.
- 4 Play/pause.
- 5 Touch the icon to switch repeat modes: **Repeating all songs, Repeating current song, Shuffle play, Repeat is off**.
- 6 Touch to go back to previous track.
- 7 Touch to go to the next track.
- 8 Set as favorites.
- 9 Swipe to the right or to the left to skip to the next track or previous track in the album, playlist, or shuffle.



While playing songs with Mix you can still Pause, Play or Skip your music even if the screen is locked.

8

Others.....

8.1 Files.....

To open Files, touch the Application tab from the Home screen, then touch **Files**.

Files displays all data stored on the phone and the microSD card, including applications, media files downloaded from Google Play Store, YouTube or other locations; videos, pictures or audios you have captured; other data transferred via Bluetooth, USB cable, etc.

When you download an application from PC to phone/microSD card, you can locate the application on Files, then touch it to install it on your phone.

Files allows you to perform and be really efficient with the following common operations: create (sub) folder, open folder/file, view, rename, move, copy, delete, play, share, etc.

8.2 Sound Recorder.....

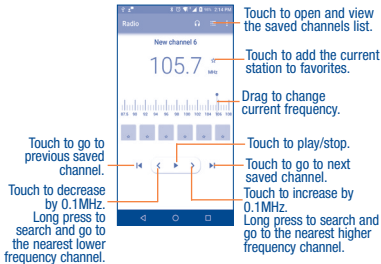
To record a sound or voice memo, touch the Application tab from the Home screen, then touch **Sound Recorder**.


Sound Recorder allows you to record voice/sound for seconds/hours.

8.3 Radio.....

Your phone is equipped with a radio ⁽¹⁾ with RDS ⁽²⁾ functionality. You can use the application as a traditional radio with saved channels or with parallel visual information related to the radio program on the display if you tune to stations that offer Visual Radio service.

To listen to the radio, touch the Application tab from the Home screen, then touch **Radio**.



 To use it, you must plug in your headset, which works as an antenna connected with your phone.

⁽¹⁾ The quality of the radio depends on the coverage of the radio station in that particular area.

⁽²⁾ Depending on your network carrier and market.

Touch  on the up right corner of the radio playing screen to find available options:

- **Save channel** Save the current channel.
- **Scan channels** Touch to scan all the available channels.
- **Delete** Delete the channel
- **Enter frequency** Enter the frequency manually.
- **Station Info** Mark the checkbox to show station information.
- **Exit** Turn off the radio.

8.4 Other applications ⁽¹⁾

The previous applications in this section are preinstalled on your phone. You can also download thousands of 3rd party applications by going to Google Play Store on your phone.

⁽¹⁾ Application availability depends on country and provider.

9

Google applications ⁽²⁾

Google apps are preinstalled on your phone to improve work efficiency and help you enjoy life.

This manual briefly introduces the apps. For detailed features and user guides, refer to related websites or the introduction provided in the apps.

You are recommended to register with a Google account to enjoy all the functions.


9.1 Play Store

Serves as the official app store for the Android operating system, allowing users to browse and download applications and games. Applications are either free of charge or at a cost.

In the Play Store, search for the app you need, download it and then follow the installation guide to install the app. You can also uninstall, update an app, and manage your downloads.

9.2 Chrome

Using the Chrome browser you can enjoy surfing the Web. Your bookmarks, browsing history, and settings across all devices with the browser installed can be synchronized with your Google account.

To get onto the Web, go to the Home screen and touch the Chrome icon  in the Favorites tray.

⁽²⁾ Availability depends on phone variants.

To go to a web page

On the Chrome browser screen, touch the URL box at the top, enter the address of the web page, touch  on keyboard to confirm.



Delete all contents



During web page surfing, touch  for settings or more options.

9.3 Gmail






As the Google's web-based email service, Gmail is configured when you first set up your phone. Gmail on your phone can be automatically synchronized with your Gmail account on the web. With this application, you can receive and send mails, manage mails by labels, and archive mails, etc.


To open Gmail


From the Home screen, touch the **Gmail** icon  in the Favorites tray.

Gmail displays messages and conversations from one single Gmail account at a time. If you own more than one account, you can add an account by touching the icon  and then  after your account name from the Inbox screen, then touch **Add account**. When finished, you can switch to another account by touching the name of the account you want to view.


To create and send emails

- 1 Touch  from the Inbox screen.
- 2 Enter the recipient(s)'s email address in **To** field.
- 3 If necessary, touch the **Add Cc/Bcc** menu icon  to add a copy or a blind copy to the message.
- 4 Enter the subject and the content of the message.
- 5 Touch  icon and select **Attach file** to add an attachment.
- 6 Finally, touch the icon  to send.
- 7 If you do not want to send the mail out right away, you can touch the  icon and then **Save draft** or touch the **Back** key to save a copy. To view the draft, touch your account name to display all labels, then select **Drafts**.

If you do not want to send or save the mail, you can touch the  icon and then touch **Discard**.



To add a signature to emails, touch the  icon and then touch **Settings** from inbox screen, choose an account, then touch **Signature**.

To receive and read your emails




When a new email arrives, you will be notified by a ringtone or vibration, and an icon  will appear on the Status bar.

Touch and drag the Status bar down to display the Notification panel, then touch the new email to view. You can also open the Gmail Inbox label and touch the new mail to read the email.

You can search for an email by sender, recipient, subject, etc.

- 1 Touch the icon  from Inbox screen.
- 2 Enter the keyword you want to search for in the search bar and touch  on the software keyboard.

To reply or forward emails

- **Reply** When viewing an email, touch .
- **Reply all** Touch  and select **Reply all** to send a message to all people in a mail loop.
- **Forward** Touch  and select **Forward** to forward the received mail to other people.

9.4 Maps

Google Maps offer satellite imagery, street maps, 360° panoramic views of streets, real-time traffic conditions, and route planning for traveling by foot, car, or public transportation. By using this application, you can get your own location, search for a place, and get suggested route planning for your trips.

9.5 YouTube

YouTube is an online video-sharing application where users can upload, view, and share videos. Available content includes video clips, TV clips, music videos, and other content such as video blogging, short original videos, and educational videos. It supports a streaming function that allows you to start watching videos almost as soon as they begin downloading from the Internet.

9.6 Drive

Google Drive is a file storage and synchronization service created by Google, which allows users to store files in cloud, share and edit files.

Files in Drive are well kept and you can reach your files from any device by logging in to your Google account. Files or folders can be shared privately with particular users that have a Google account.

9.7 Play Music

A music streaming service and online music locker operated by Google.

You can upload and listen to a large number of songs for free. In addition to offering music streaming for Internet-connected devices, the Google Play Music app allows music to be stored and listened to offline. Songs purchased through the Play Music are automatically added to the user's account.

9.8 Play Movies & TV

Movies and television shows can be viewed online via Google Play Movies & TV. You can also download movies and TV shows for offline viewing. Some content are only available for rental or purchase.

9.9 Duo

Google Duo is a video chat mobile app, it allows users to use phone numbers to easily call people from their contact list. The app will automatically control the video quality by sensing the network connectivity.

9.10 Photos

Google Photos stores and backs up your photos and videos. It also automatically analyses photos and organizes them into groups, so that you can quickly locate the photos you need.

10 Settings

To open Settings, Touch the Application tab and **Settings** from Home screen.

10.1 Suggestions

There are several frequently used function displayed here. Default items are **Screen lock** and **Add another email account**.

10.2 Wireless & network

10.2.1 Wi-Fi

While using Wi-Fi, you can surf the Internet without network signal whenever you are in range of a wireless network. The only thing you have to do is to enter the **Wi-Fi** screen and configure an access point to connect your phone to the wireless network.


For detailed instructions on using Wi-Fi, refer to “**6.1.2 Wi-Fi**”.

10.2.2 Bluetooth

Bluetooth allows your phone to exchange data (videos, images, music, etc.) in a small range with another Bluetooth supported device (phone, computer, printer, headset, car kit, etc.).

For more information on Bluetooth, refer to “**6.3 Connecting to Bluetooth devices**”.

10.2.3 Data usage

Touch  you can view settings related to your data usage. Mark the checkbox to set cellular data limit. Your cellular data connection will be disabled when the specified limit is reached. You can also choose a data usage cycle to view the statistics and related applications of used data by your phone.



Data usage is measured by your phone and your provider may count differently. You can set conservative limit to control data usage.

10.2.4 More/Airplane mode

Mark the Airplane mode checkbox to simultaneously disable all wireless connections including Wi-Fi, Bluetooth and more.

10.2.5 More/Tethering & portable hotspot

This function allows you to share your phone's mobile data connection via USB or as a portable Wi-Fi access point (refer to “6.4 Sharing your phone's mobile data connection”).

10.2.6 More/VPN

A mobile virtual private network (mobile VPN or mVPN) provides mobile devices with access to network resources and software applications on their home network, when they connect via other wireless or wired networks. Mobile VPNs are used in environments where workers need to keep application sessions open at all times, throughout the working day, as the user connects via various wireless networks, encounters gaps in coverage, or suspend-and-resumes their devices to preserve battery life. A conventional VPN can't survive such events because the network tunnel is disrupted, causing applications to disconnect, time out, fail, or even the computing device itself to crash.

For more information on VPN, refer to “**6.6 Connecting to virtual private networks**”.

10.2.7 More/Cellular networks

Data roaming

If you don't need to transmit data on other provider's mobile networks, unmark the checkbox to avoid incurring significant roaming charges.

Access Point Names

You can select your preferred network with this menu.

Network carriers

You can select a network carrier.

10.2.8 Network settings reset

Touch to reset all network settings including Wi-Fi, Bluetooth & other networks settings to factory defaults.

10.3 Device

10.3.1 Gestures


Turn over to mute

Mark the checkbox to mute ringtones such as alarms, incoming calls etc. by turning the phone over.

Turn over to activate snooze

Toggle the switch  to activate the snooze feature or dismiss a ringtone when the device is turned over.


Double tap screen

Toggle the switch  to enable double tap to turn on or turn off the homescreen.

Three fingers screenshots

Toggle the switch  to enable dragging 3 fingers down screen to take screenshots.

Jump to Camera

Toggle the switch  to quickly open camera by pressing the power key twice from any screen.

10.3.2 Lock screen

Func

Touch to customize the application shortcuts displayed on your lock screen.


Screen lock

Touch to set your screen unlock method. For example, you can unlock your phone by sliding the screen, entering a password, or drawing a pattern, etc.

Smart lock

You must set a screen lock first when you enable this function. Smart lock can recognize signals like your device's proximity to your home or your car's Bluetooth system, and keep your device unlocked when it's safe with you.

10.3.3 Display

- **Brightness level** Touch to adjust screen brightness manually.
- **Adaptive brightness** When the function is turned on, the screen brightness level will optimize automatically according to the available light.
- **Wallpaper** Touch to set the wallpaper.
- **Sleep** Touch to set screen timeout.
- **Screen saver** Touch to set what happens when the phone is docked and/or sleeping.
- **Ambient display** Touch  to enable wake screen when receive notification.
- **Font size** Touch to set the font size.
- **Display size** Touch to set the display size.
- **When device is rotated** Touch to select whether the screen rotates automatically or not.

10.3.4 Notifications

Touch to manage apps notification. You can set permission of apps notification, the authority to show the notifications on locked screen, etc.

10.3.5 Sound

Use the Sound settings to configure many aspects of call ringtones, music, and other audio settings.


- **Silent mode** Switch the toggle to turn on/off Silent mode.
- **Volume** Set volume for media, ringtone, and alarms.
- **Phone ringtone** Touch to set your incoming call ringtone.
- **Also vibrate for calls** Switch the toggle to enable vibration for incoming calls.

- **Do Not Disturb** Touch to set how calls and notifications interrupt whatever you are doing on your phone.
- **Default notification ringtone** Touch to set the default sound for notifications.
- **Mute power on & off tone** Switch the toggle to enable/disable the power on & off tone.
- **Default alarm ringtone** Touch to set your alarm ringtone.
- **Emergency broadcasts** Touch to set emergency alerts.
- **Other sounds** Touch to set dial pad tones, screen locking sounds, touch sounds and vibrate on touch.

10.3.6 Apps

You use the **Apps** settings to view details about the applications installed on your phone, to manage their data and force them to stop, and to set whether you want to permit installation of applications that you obtain from websites and emails.

10.3.7 Storage

This menu displays the amount of internal phone storage. It shows the amount of internal phone storage used by applications (including those you downloaded), images, videos, etc. Touch the items to view details and touch  in the details screen to access more available options.

10.3.8 Battery

In the Battery screen you can select whether to display battery percentage in the status bar or to enable intelligent power saving.

You can also view the battery usage data since your last full charge. The screen also shows your battery status and how long it can still be used before your next charge. Touch one category, then you can learn its specific power consumption.

10.3.9 Memory

Touch to check and manage the phone memory.

10.4 Personal

10.4.1 Location

On

Touch the switch to enable the use of information from Wi-Fi and mobile networks to determine your approximate location, for use in Google Maps, when you search, and so on. When you select this option, you're asked whether you give consent to share your location anonymously with Google's location service.

Mode

Touch to select High accuracy, Battery saving or Device only mode.

High accuracy: Use GPS, Wi-Fi, Bluetooth, or cellular network to determine location.

Battery saving: Use Wi-Fi, Bluetooth, or cellular network to determine location.

Device only: Use GPS to determine location.

Location services

Touch to report location feedback via IZat or Google account.

Recent location requests

This list shows apps that have requested location recently.

10.4.2 Security

Encrypt phone

Require a numeric PIN or passwords to decrypt your phone each time you power it on.

Make passwords visible

Mark the checkbox to show passwords as you type.

Device administrators

Touch to view or deactivate device administrators.

Unknown sources

Mark the checkbox to permit installation of applications that you obtain from websites, emails, or other locations other than Google Play Store.

To protect your phone and personal data, download applications only from trusted sources, such as Google Play Store.

Storage type

Show storage type.

Trusted credentials

Touch to display trusted CA certificates.

User credentials

Touch to check and manage stored credentials.

Install from storage

Touch to install encrypted certificates from storage.

Clear credentials

Touch to remove all certificates.

Trusted agents

Open the setting to view and deactivate trusted agents. You must set a screen lock first when you enable this function.

Screen pinning

Turn on the switch , you can always keep a screen in view until you unpin.

Open the screen you want to pin, touch the Overview key, swipe up the screen and then touch the pin icon . To unpin it, long press the Back key.

App with usage access


Open the menu to view or reset your app usage access.

10.4.3 Accounts

Use the **Account** settings to add, remove, and manage your email and other supported accounts. You can also use these settings to control how and whether all applications send, receive, and synchronize data on their own schedules, and whether all applications can synchronize user data automatically.

Add account

Touch the **Add account** icon  to add an account for selected app.

Touch an account to see all sync options. Mark the checkbox to permit applications to synchronize data on their own schedule. You can also touch  and **Sync now** to synchronize data for the chosen items of that account.

10.4.4 Google

Location


Touch to access Location (refer to section “10.4.1 Location”).

Security

Remotely locate this device: Turn on the switch , the device location can show on Android Device Manager.

Allow remote lock and erase: Turn on the switch , you can remotely lock or factory reset the device with Android Device Manager if you lose the device.

Scan device for security treats: Turn on the switch , Google will regularly check your device and prevent or warn about potential harm.

Improve harmful app detection: Turn on the switch , the device will send unknown apps to Google for better detection. Turn on Scan device for security treats first before turn on this function.

Set up nearby device

This feature helps you restore your nearby device while you are in same Wi-Fi region and the device is adjacent to you. If you are booting your device for the first time, you will come across and option **Got another device**. Now select the option copy your Google accounts, apps, and data from your other device and click on **NEXT**. Follow the steps to finish setup, the data will be copied from a nearby device to your new device.

Ads

Reset advertising ID: Touch to reset your advertising ID with a new random number.

Opt out of Ads Personalization: Turn on the switch , apps not to use your advertising ID to build profiles or show you personalized ads.

Ads by Google: Touch to open the Ads with **Browser** or **Chrome**.

Nearby

Nearby allows Google recommend applications or websites for the user based on user's location information. When it detects the user is in the museum visit, it will be recommended to the user audio applications.

Your device must be online to show links to apps or websites from things nearby.

Touch **SCAN NOW** to scan available apps or website.

Search

The phone provides a search function which can be used to find the information you want on your phone, in your applications or on the web.

Touch to access settings about accounts and privacy, language, voice search, etc.

10.4.5 Language & Input

Use the Language & input settings to select the language for the text on your phone and for configuring the onscreen keyboard. You can also configure voice input settings and the pointer speed.

Language

Touch to select the language and the region you want.

Spell checker

Mark the checkbox to enable the system to show suggested words.

Personal dictionary

Touch to open a list of the words you've added to the dictionary. Touch a word to edit or delete it. Touch the add button (+) to add a word.


Virtual keyboard

Google keyboard: The Google keyboard settings apply to the onscreen keyboard that is included with your phone. The correction and capitalization features affect only the English version of the keyboard.

Google voice typing: Google voice typing offers free speech-to-text capabilities which can let you input words by talking instead of typing by hand.

Tap the microphone icon on the on-screen keyboard to start Voice Typing.

Physical keyboard

Show virtual keyboard: Touch the switch  to enable virtual keyboard on screen while physical keyboard is active.

Keyboard shortcuts helper: Touch to view the available keyboard shortcuts.

Text-to-speech output

Preferred engine: To choose a preferred text-to-speech engine, touch the settings icon to show more choices for each engine.

Speech rate: Touch to open a dialog where you can select how quickly you want the synthesizer to speak.

Pitch: Adjust the tone of the spoken text.

Reset speech rate: Touch to reset the speech at which the text is spoken to default.

Reset speech pitch: Touch to reset the pitch at which the text is spoken to default.

Listen to an example: Touch to play a brief sample of the speech synthesizer, using your current settings.

Default language status: This will show status of your default language.

Pointer speed

Touch to open a dialog where you can change the pointer speed, touch OK to confirm.

10.4.6 Backup & reset

Back up my data

Touch the switch to back up your phone's settings and other application data to Google servers, with your Google account. If you replace your phone, the settings and data you've backed up are restored onto the new phone for the first time you sign in with your Google account. If you mark this option, a wide variety of settings and data are backed up, including your Wi-Fi passwords, bookmarks, a list of the applications you've installed, the words you've added to the dictionary used by the onscreen keyboard, and most of the settings that you configure with the Settings application. If you unmark this option, you stop backing up your settings, and any existing backups are deleted from Google servers.

Back up account

Touch to back up your account.

Automatic restore

Touch the switch to restore your backed up settings or other data when you reinstall an application.

Factory data reset

Erase all of your personal data from the internal phone storage, including information about your Google account, any other accounts, your system and application settings, and any downloaded applications. Resetting the phone does not erase any system software updates you've downloaded or any files on your microSD card, such as music or photos. If you reset the phone in this way, you're prompted to re-enter the same kind of information as when you first started Android.

When you are unable to power on your phone, there is another way to perform a factory data reset by using hardware keys. Hold down the **Volume up** key and the **Power** key at same time until the screen lights up.

10.5 System

10.5.1 Date & time

Use Date & time settings to customize your preferences for how date and time are displayed.

Automatic date & time

Touch the switch to use network-provided date and time or unmark to set all values manually.

Automatic time zone

Touch the switch to use network-provided time zone or unmark to set all values manually.

Set date

Touch to open a dialog where you can manually set the phone's date.

Set time

Touch to open a dialog where you can manually set the phone's time.

Select time zone

Touch to open a dialog where you can set the phone's time zone.

Use 24-hour format

Touch the switch to display the time using 24-hour clock format.

10.5.2 Accessibility

You use the Accessibility settings to configure any accessibility plug-ins you have installed on your phone.

TalkBack

Touch to turn on/off TalkBack. With TalkBack on, your device provides spoken feedback to help blind and low-vision users by describing what you touch, select and activate.

Switch Access

Turn on Switch Access switch  to allow you to control your phone with configurable key combinations. Touch **Settings** on the top right of the screen to assign key combination for listed behaviors.

Captions

Touch to on/off captions for phone screen.

Magnification gestures

Touch to turn on/off to activate/deactivate zoom in/out function by triple-tapping the screen.

Font size

Touch the setup the font size of text on screen to default, larger and largest.

Display size

Touch to setup the display size of items, such as app icon, message, etc. Some apps on your screen may change position.

Touch after pointer stops moving

Touch the  to turn on/off the delay before click. Draw the indicate line to adjust how long to delay before click.

High contrast text

Touch the switch to activate high contrast text.

Power key ends call

Touch the switch to enable power button ends call.

Auto-rotate screen

Touch the switch to activate auto-rotate screen. Content on the screen or the keyboard will be automatically rotated when you rotate your phone.

Speak passwords

Touch the switch to enable enter passwords by spoken.

Large Mouse pointer

Touch the switch to enlarge mouse pointer.

Mono audio

Touch the  to enable/disable combine channels when playing audio.

Accessibility shortcut

When accessibility shortcut is turned on, you can quickly activate accessibility features in two steps. Touch the  to turn on/off this feature.

Text-to-speech output

Touch to update the settings for text-to-speech output, such as the speech rate.

Touch & hold delay

Touch to adjust the duration of long press delay. This function enables your phone to differ touch and touch & hold, which may avoid incorrect operations.

Color inversion

Touch the switch to turn on/off color inversion.

Color correction

Touch to turn on/off color correction.

10.5.3 Printing

Your phone supports wireless printing to enabled printers and online services.

10.5.4 Developer options

To enable this function, go to **Settings / About phone**, then touch **Build number** 7 times. Now **Developer options** is available. The developer options screen contains settings that are useful for developing Android applications.

10.5.5 About phone

This contains information about things ranging from Model number, Android version, Android security patch level, Baseband version Kernel version, Build number to those listed below:

Software Update

Touch to check for Software updates.

System app updates

Touch to check for app updates.

Status

This contains the status of the Battery status, Battery level, My phone number, Mobile network type, Signal strength, etc.

Legal information

Touch to view legal information.

Safety and use.....

Please read before using your phone

THE BATTERY IS NOT FULLY CHARGED WHEN YOU TAKE IT OUT OF THE BOX. DO NOT REMOVE THE BATTERY PACK WHEN THE PHONE IS CHARGING. YOUR WARRANTY IS INVALIDATED IF YOU DISASSEMBLE OR ATTEMPT TO DISASSEMBLE THE DEVICE.

Privacy restrictions

Some countries require full disclosure of recorded telephone conversations, and stipulate that you must inform the person with whom you are speaking that the conversation is being recorded. Always obey the relevant laws and regulations of your country when using the recording feature of your phone.

Disclaimers

ANY WEATHER, STOCK, OR OTHER INFORMATION, DATA, OR DOCUMENTATION ("ACCESSED INFORMATION") ARE PROVIDED "AS IS" AND WITHOUT ANY WARRANTY OR ANY TECHNICAL SUPPORT. TO THE MAXIMUM EXTENT PERMITTED BY APPLICABLE LAW, TCT MOBILE AND ITS AFFILIATES expressly disclaim any and all representations and warranties, arising by law or otherwise, related to the Accessed Information, including without limitation any express or implied representation or warranty of merchantability, fitness for a particular purpose, non-infringement, quality, accuracy, completeness, effectiveness, reliability, or usefulness. Without limiting the foregoing, it is further understood that TCT Mobile and its Affiliates are not responsible for any use of the Accessed Information or the results arising from such use, and that you use such information at your own risk.

Limitation of damages

TO THE MAXIMUM EXTENT PERMITTED BY APPLICABLE LAW, IN NO EVENT SHALL TCT MOBILE OR ITS AFFILIATES BE LIABLE TO YOU, ANY USER, OR THIRD PARTY FOR ANY INDIRECT, SPECIAL, CONSEQUENTIAL, INCIDENTAL OR PUNITIVE DAMAGES OF ANY KIND, ARISING IN CONTRACT, TORT, OR OTHERWISE, INCLUDING, BUT NOT LIMITED TO, INJURY, LOSS OF REVENUE, LOSS OF GOODWILL, LOSS OF BUSINESS OPPORTUNITY, LOSS OF DATA, AND/OR LOSS OF PROFITS, REGARDLESS OF THE FORESEEABILITY THEREOF OR WHETHER TCT MOBILE OR ITS AFFILIATES HAVE BEEN ADVISED OF THE POSSIBILITY OF SUCH DAMAGES. AND IN NO EVENT SHALL THE TOTAL LIABILITY OF TCT MOBILE OR ITS AFFILIATES EXCEED THE AMOUNT RECEIVED FROM YOU, REGARDLESS OF THE LEGAL THEORY UNDER WHICH THE CAUSE OF ACTION IS BROUGHT. THE FOREGOING DOES NOT AFFECT ANY STATUTORY RIGHTS WHICH MAY NOT BE DISCLAIMED.

Important health information and safety precautions

When using this product, the safety precautions below must be taken to avoid possible legal liabilities and damages.

Retain and follow all product safety and operating instructions. Observe all warnings in the operating instructions on the product.

To reduce the risk of bodily injury, electric shock, fire, and damage to the equipment, observe the following precautions.

WARNING: This product contains chemicals known to the State of California to cause cancer and birth defects or other reproductive harm.

Warning: Not all 911 emergency service providers are capable of receiving location information. Be prepared to report your precise location/address when calling 911. The device location cannot be identified in all circumstances.

Electrical safety

This product is intended for use when supplied with power from the designated battery or power supply unit. Other usage may be dangerous and will invalidate any approval given to this product.

Safety precautions for proper grounding installation

CAUTION: Connecting to improperly grounded equipment can result in an electric shock to your device.

Safety precautions for power supply unit

■ Use the correct external power source

A product should be operated only from the type of power source indicated on the electrical ratings label. If you are not sure of the type of power source required, consult your authorized service provider or local power company. For a product that operates from battery power or other sources, refer to the operating instructions that are included with the product. This product should be operated only with the following designated power supply unit(s).
Travel charger: Input: 100-240 V, 50/60 Hz, 200mA

Output: 5 V, 1000mA

■ Handle battery packs carefully

This product contains a Lithium-ion polymer or Lithium-ion battery. There is a risk of fire and burns if the battery pack is handled improperly. Do not attempt to open or service the battery pack. Do not disassemble, crush, puncture, short external contacts or circuits, dispose of in fire or water, or expose a battery pack to temperatures higher than 140°F (60°C) .



WARNING: Danger of explosion if battery is incorrectly replaced. To reduce risk of fire or burns, do not disassemble, crush, puncture, short external contacts, expose to temperature above 140°F (60°C), or dispose of in fire or water. Replace only with specified batteries. Recycle or dispose of used batteries according to the local regulations or reference guide supplied with your product.



NOTE: This product should be operated only with the following designated Battery Pack(s).

■ Take extra precautions

- Keep the battery or device dry and away from water or any liquid as it may cause a short circuit.
- Keep metal objects away so they don't come in contact with the battery or its connectors as it may lead to short circuit during operation.
- The phone should only be connected to products that bear the USB-IF logo or have completed the USB-IF compliance program.
- Do not use a battery that appears damaged, deformed, or discolored, or the one that has any rust on its casing, overheats, or emits a foul odor.
- Always keep the battery out of the reach of **babies and small children, to avoid swallowing** of the battery. Consult the doctor immediately if the battery is swallowed.
- Only use the battery with a charging system that has been qualified with the system per this standard, IEEE-Std-1725-2011. Use of an unqualified battery or charger may present a risk of fire, explosion, leakage or other hazard.
- Replace the battery only with another battery that has been qualified with the system per this standard, IEEE-Std-1725-2011. Use of an unqualified battery may present a risk of fire, explosion, leakage or other hazard.
- Avoid dropping the phone or battery. If the phone or battery is dropped, especially on a hard surface, and the user suspects damage, take it to a service center for inspection.
- If the battery leaks:
 - Do not allow the leaking fluid to come in contact with skin or clothing. If already in contact, flush the affected area immediately with clean water and seek medical advice.
 - Do not allow the leaking fluid to come in contact with eyes. If already in contact, DO NOT rub; rinse with clean water immediately and seek medical advice.
 - Take extra precautions to keep a leaking battery away from fire as there is a danger of ignition or explosion.

Safety precautions for direct sunlight

Keep this product away from excessive moisture and extreme temperatures. Do not leave the product or its battery inside a vehicle or in places where the temperature may exceed 140°F (60°C), such as on a car dashboard, window sill, or behind a glass that is exposed to direct sunlight or strong ultraviolet light for extended periods of time. This may damage the product, overheat the battery, or pose a risk to the vehicle.

Prevention of hearing loss

CAUTION: Permanent hearing loss may occur if earphones or headphones are used at high volume for prolonged periods of time.

Safety in aircraft

Due to the possible interference caused by this product to an aircraft's navigation system and its communications network, using this device's phone function on board an airplane is against the law in most countries. If you want to use this device while on board of an aircraft, remember to turn off your phone by switching to Airplane Mode.

Environment restrictions

Do not use this product in gas stations, fuel depots, chemical plants or where blasting operations are in progress, or in potentially explosive atmospheres such as fuelling areas, fuel storehouses, below the deck on boats, chemical plants, fuel or chemical transfer or storage facilities, and areas where the air contains chemicals or particles, such as grain, dust, or metal powders. Be aware that sparks in such areas could cause an explosion or fire resulting in bodily injury or even death.

Explosive atmospheres

When in any area with a potentially explosive atmosphere or where flammable materials exist, the product should be turned off and the user should obey all signs and instructions. Sparks in such areas could cause an explosion or fire resulting in bodily injury or even death.

Users are advised not to use the equipment at refueling points such as service or gas stations, and are reminded of the need to observe restrictions on the use of radio equipment in fuel depots, chemical plants, or where blasting operations are in progress. Areas with a potentially explosive atmosphere are often, but not always, clearly marked. These include fueling areas, below the deck on boats, fuel or chemical transfer or storage facilities, and areas where the air contains chemicals or particles, such as grain, dust, or metal powders.

Road safety

Full attention must be given to driving at all times in order to reduce the risk of an accident. Using a phone while driving (even with a hands free kit) causes distraction and can lead to an accident. You must comply with local laws and regulations restricting the use of wireless devices while driving.

Safety precautions for RF exposure

- Avoid using your phone near metal structures (for example, the steel frame of a building).
- Avoid using your phone near strong electromagnetic sources, such as microwave ovens, sound speakers, TV and radio.
- Only use original manufacturer-approved accessories, or accessories that do not contain any metal.
- Use of non-original manufacturer-approved accessories may violate your local RF exposure guidelines and should be avoided.

Interference with medical equipment functions

This product may cause medical equipment to malfunction. The use of this device is forbidden in most hospitals and medical clinics.

If you use any other personal medical device, consult the manufacturer of your device to determine if they are adequately shielded from external RF energy. Your physician may be able to assist you in obtaining this information.

Turn your phone OFF in health care facilities when any regulations posted in these areas instruct you to do so. Hospitals or health care facilities may be using equipment that could be sensitive to external RF energy.

Nonionizing radiation

Your device has an internal antenna. This product should be operated in its normal-use position to ensure the radiative performance and safety of the interference. As with other mobile radio transmitting equipment, users are advised that for satisfactory operation of the equipment and for the safety of personnel, it is recommended that no part of the human body be allowed to come too close to the antenna during operation of the equipment.

Only use the supplied integral antenna. Use of unauthorized or modified antennas may impair call quality and damage the phone, causing loss of performance and SAR levels exceeding the recommended limits as well as result in non-compliance with local regulatory requirements in your country. To assure optimal phone performance and ensure human exposure to RF energy is within the guidelines set forth in the relevant standards, always use your device only in its normal-use position. Contact with the antenna area may impair call quality and cause your device to operate at a higher power level than needed. Avoiding contact with the antenna area when the phone is IN USE optimizes the antenna performance and the battery life.

Electrical safety

■ Accessories

- Only use approved accessories.
- Do not connect with incompatible products or accessories.
- Make sure not to touch or allow metal objects, such as coins or key rings, to contact or short-circuit the battery terminals.

■ Connection to a car

- Seek professional advice when connecting a phone interface to the vehicle electrical system.

■ Faulty and damaged products

- Do not attempt to disassemble the phone or its accessory.
- Only qualified personnel must service or repair the phone or its accessory.

General precautions

You alone are responsible for how you use your phone and any consequences of its use. You must always switch off your phone wherever the use of a phone is prohibited. Use of your phone is subject to safety measures designed to protect users and their environment.

■ Avoid applying excessive pressure to the device

Do not apply excessive pressure on the screen and the device to prevent damaging them and remove the device from your pants' pocket before sitting down. It is also recommended that you store the device in a protective case and only use the device stylus or your finger when interacting with the touch screen. Cracked display screens due to improper handling are not covered by the warranty.

■ Device getting warm after prolonged use

When using your device for prolonged periods of time, such as when you're talking on the phone, charging the battery or browsing the Web, the device may become warm. In most cases, this condition is normal and therefore should not be interpreted as a problem with the device.

■ Heed service markings

Except as explained elsewhere in the Operating or Service documentation, do not service any product yourself. Service needed on components inside the device should be done by an authorized service technician or provider.

■ Protect your phone

- Always treat your phone and its accessories with care and keep them in a clean and dust-free place.
- Do not expose your phone or its accessories to open flames or lit tobacco products.
- Do not expose your phone or its accessories to liquid, moisture or high humidity.
- Do not drop, throw or try to bend your phone or its accessories.
- Do not use harsh chemicals, cleaning solvents, or aerosols to clean the device or its accessories.
- Do not paint your phone or its accessories.

- Do not attempt to disassemble your phone or its accessories, only authorized personnel must do so.
- Do not expose your phone or its accessories to extreme temperatures, maximum 140°F (60°C).
- Please check local regulations for disposal of electronic products.
- Do not carry your phone in your back pocket as it could break when you sit down.

■ Damage requiring service

Unplug the product from the electrical outlet and refer servicing to an authorized service technician or provider under the following conditions:

- Liquid has been spilled or an object has fallen into the product.
- The product has been exposed to rain or water.
- The product has been dropped or damaged.
- There are noticeable signs of overheating.
- The product does not operate normally when you follow the operating instructions.

■ Avoid hot areas

The product should be placed away from heat sources such as radiators, heat registers, stoves, or other products (including amplifiers) that produce heat.

■ Avoid wet areas

Never use the product in a wet location.

■ Avoid using your device after a dramatic change in temperature

When you move your device between environments with very different temperature and/or humidity ranges, condensation may form on or within the device. To avoid damaging the device, allow sufficient time for the moisture to evaporate before using the device.

NOTICE: When taking the device from low-temperature conditions into a warmer environment or from high-temperature conditions into a cooler environment, allow the device to acclimate to room temperature before turning on power.

■ Avoid pushing objects into product

Never push objects of any kind into cabinet slots or other openings in the product. Slots and openings are provided for ventilation. These openings must not be blocked or covered.

■ Air bags

Do not place a phone in the area over an air bag or in the air bag deployment area. Store the phone safely before driving your vehicle.

■ Mounting accessories

Do not use the product on an unstable table, cart, stand, tripod, or bracket. Any mounting of the product should follow the manufacturer's instructions, and should use a mounting accessory recommended by the manufacturer.

■ Avoid unstable mounting

Do not place the product with an unstable base.

■ Use product with approved equipment

This product should be used only with personal computers and options identified as suitable for use with your equipment.

■ Adjust the volume

Turn down the volume before using headphones or other audio devices.

■ Cleaning

Unplug the product from the wall outlet before cleaning. Do not use liquid cleaners or aerosol cleaners. Use a damp cloth for cleaning, but NEVER use water to clean the LCD screen.

■ Small children

Do not leave your phone and its accessories within the reach of small children or allow them to play with it. They could hurt themselves or others, or could accidentally damage the phone. Your phone contains small parts with sharp edges that may cause an injury or which could become detached and create a choking hazard.



■ Repetitive motion injuries

To minimize the risk of RSI, when Texting or playing games with your phone:

- Do not grip the phone too tightly
- Press the buttons lightly
- Make use of the special features in the handset which minimize the number of buttons which have to be pressed, such as message templates and predictive text.
- Take lots of breaks to stretch and relax.

■ Operating machinery

Full attention must be given to operating the machinery in order to reduce the risk of an accident.

■ Loud noise

This phone is capable of producing loud noises which may damage your hearing.

■ Emergency calls

This phone, like any wireless phone, operates using radio signals, which can't guarantee connection in all circumstances. Therefore, you must never rely solely on any wireless phone for emergency communications.

Note: Not all 911 emergency service providers are capable of receiving location information. Be prepared to report your precise location/address when calling 911. The device location cannot be identified in all circumstances.

Regulatory agency identifications

For regulatory identification purposes, your product is assigned a model number of A576BL.

To ensure continued reliable and safe operation of your device, use only the accessories listed below with your A576BL device.

Operating temperature range: 32°F to 104°F (0°C to 40°C)

NOTE: This product is intended for use with a certified Class Limited Power Source, rated 4.35 Volts DC, maximum 1 Amp power supply unit.

Federal Communication Commission Interference Statement

This equipment has been tested and found to comply with the limits for a Class B digital device, pursuant to Part 15 of the FCC Rules. These limits are designed to provide reasonable protection against harmful interference in a residential installation. This equipment generates, uses and can radiate radio frequency energy and, if not installed and used in accordance with the instructions, may cause harmful interference to radio communications. However, there is no guarantee that interference will not occur in a particular installation. If this equipment does cause harmful interference to radio or television reception, which can be determined by turning the equipment off and on, the user is encouraged to try to correct the interference by one of the following measures:

- Reorient or relocate the receiving antenna.
- Increase the separation between the equipment and receiver.
- Connect the equipment into an outlet on a circuit different from that to which the receiver is connected.
- Consult the dealer or an experienced radio or television technician for help.

FCC Caution: Any changes or modifications not expressly approved by the party responsible for compliance could void the user's authority to operate this equipment.

This device complies with Part 15 of the FCC Rules. Operation is subject to the following two conditions: (1) This device may not cause harmful interference, and (2) this device must accept any interference received, including interference that may cause undesired operation.

Important Note

Radiation Exposure Statement:

This equipment complies with FCC radiation exposure limits set forth for an uncontrolled environment. End users must follow the specific operating instructions for satisfying RF exposure compliance. To maintain compliance with FCC RF exposure compliance requirements, please follow operation instruction as documented in this manual.

This transmitter must not be co-located or operating in conjunction with any other antenna or transmitter, except the transmitters built-in with the device.

US Information Concerning the Federal Communications Commission ("FCC") Requirements for Hearing Aid Compatibility with Wireless Devices

When wireless devices are used near hearing devices (such as hearing aids and cochlear implants), users may detect a buzzing, humming, or whining noise. Some hearing devices are more immune than others to this interference, and wireless devices also vary in the amount of interference that they generate.

The wireless telephone industry has developed ratings to assist hearing device users in finding wireless devices that may be compatible with their hearing devices. Not all wireless devices have been rated. Wireless devices that are rated will have the rating displayed on the box together with other relevant approval markings.

The ratings are not guarantees. Results will vary depending on the user's hearing device and hearing loss. If your hearing device is vulnerable to interference, you may not be able to use a rated wireless device successfully. Consulting with your hearing health professional and testing the wireless device with your hearing device is the best way to evaluate it for your personal needs.

This smartphone has been tested and rated for use with hearing aids for some of the wireless technologies that the smartphone uses. However, other wireless technologies may be used in this smartphone that have not been tested for use with hearing aids. It is important to try the different features of your smartphone thoroughly and in different locations to determine if you hear any interfering noise when using this smartphone with your hearing aid or cochlear implant. Consult your wireless service provider about its return and exchange policies, and for information about hearing aid compatibility.

Hearing aid compatibility rating for this smartphone: M4/T4

How the ratings work

M-Ratings: Wireless devices rated M3 or M4 meet FCC requirements and are likely to generate less interference to hearing devices than wireless devices that are not labeled. M4 is the better or higher of the two ratings.

T-Ratings: Wireless devices rated T3 or T4 meet FCC requirements and are likely to be more usable with a hearing device's telecoil ("T Switch" or "Telephone Switch") than unrated wireless devices. T4 is the better or higher of the two ratings. (Note that not all hearing devices have telecoils in them.)

Hearing devices may also be measured for immunity to this type of interference. Your hearing device manufacturer or hearing health professional may help you find results for your hearing device. The more immune your hearing aid is, the less likely you are to experience interference noise from wireless devices.

For more information about the actions that the FCC has taken with regard to hearing aid compatibility with wireless devices and other steps that the FCC has taken to ensure that individuals with disabilities have access to telecommunications services, visit www.fcc.gov/cgb/dro.

SAR Information

0.81 W/kg @ 1g (HEAD)

1.11 W/kg @ 1g (BODY)

THIS MODEL DEVICE MEETS THE GOVERNMENT'S REQUIREMENTS FOR EXPOSURE TO RADIO WAVES. For body worn operation, this phone has been tested and meets the FCC RF exposure guidelines when used with the TCT Mobile Limited. Accessories supplied or designated for this product. Use of other accessories may not ensure compliance with the FCC RF exposure guidelines.

Your wireless mobile phone is a radio transmitter and receiver. It is designed and manufactured not to exceed the emission limits for exposure to radio frequency (RF) energy set by the Federal Communications Commission of the U.S. Government. These limits are part of comprehensive guidelines and establish permitted levels of RF energy for the general population. The guidelines are based on the safety standards previously set by both U.S. and international standards bodies:

- American National Standards Institute (ANSI) IEEE. C95.1-1992 .
- National Council on Radiation Protection and Measurement (NCRP). Report 86. 1986.
- International Commission on Non-Ionizing Radiation Protection (ICNIRP) 1996.
- Ministry of Health (Canada), Safety Code 6. The standards include a substantial safety margin designed to assure the safety of all persons, regardless of age and health.

The exposure standard for wireless mobile phone employs a unit of measurement known as the Specific Absorption Rate, or SAR. The SAR limit set by the FCC is 1.6 W/kg*.

The FCC has granted an Equipment Authorization for this model device with all reported SAR levels evaluated as in compliance with the FCC RF exposure guidelines. SAR information on this model device is on file with the FCC and can be found under the Display Grant section of <https://fjallfoss.fcc.gov/oetcf/eas/reports/GenericSearch.cfm> after searching on FCC ID: 2ACCJB075. Additional information on Specific Absorption Rates (SAR) can be found on the Cellular Telecommunications & Internet Association (CTIA) Web-site as <http://http://www.ctia.org/>.

* In the U.S. and Canada, the SAR limit for mobile phone used by the public is 1.6 Watts/kg (W/kg) averaged over one gram of tissue. The standard incorporates a substantial margin of safety to give additional protection for the public and to account for any variations in usage.

Normal condition only to ensure the radiative performance and safety of the interference. As with other mobile radio transmitting equipment, users are advised that for satisfactory operation of the equipment and for the safety of personnel, it is recommended that no part of the human body be allowed to come too close to the antenna during operation of the equipment.

Body-worn Operation

This device was tested for typical body-worn operations. To comply with RF exposure requirements, a minimum separation distance of 15 mm must be maintained between the user's body and the handset, including the antenna. Third-party belt-clips, holsters, and similar accessories used by this device should not contain any metallic components. Body-worn accessories that do not meet these requirements may not comply with RF exposure requirements and should be avoided.

Only use the supplied or an approved antenna. Unauthorized antennas, modifications, or attachments could impair call quality, damage the phone, or result in violation of regulations. Do not use the phone with a damaged antenna. If a damaged antenna comes into contact with the skin, a minor burn may result. Please contact your local dealer for replacement antenna.

FCC RF Radiation Exposure Statement

- This Transmitter has been demonstrated co-location compliance requirements with Bluetooth® and WLAN. This transmitter must not be co-located or operating in conjunction with any other antenna or transmitter.
- This equipment complies with FCC RF radiation exposure limits set forth for an uncontrolled environment.

Telecommunications & Internet Association (TIA) safety information

Pacemakers

The Health Industry Manufacturers Association recommends that a minimum separation of 15 cm (6 inches) be maintained between a handheld wireless phone and a pacemaker to avoid potential interference with the pacemaker. These recommendations are consistent with the independent research by and recommendations of Wireless Technology Research.

Persons with pacemakers:

- Should ALWAYS keep the phone more than 15 cm (6 inches) from their pacemaker when the phone is turned ON.
- Should not carry the phone in a breast pocket.
- Should use the ear opposite the pacemaker to minimize the potential for interference. If you have any reason to suspect that interference is taking place, turn the phone OFF immediately.

Hearing aids

Some digital wireless phones may interfere with some hearing aids. In the event of such interference, you may want to consult your service provider, or call the customer service line to discuss alternatives.

RoHS compliance

This product is in compliance with Directive 2011/65/EU of the European Parliament and of the Council of 7 January 2003, on the restriction of the use of certain hazardous substances in electrical and electronic equipment (RoHS) and its amendments.

Electronic Recycling (Within USA Only):

For more information on Electronic Recycling, please:

1. Visit **Alcatel** Electronic Recycling Program website at <http://www.alcatelonetouch.us/electronic-recycling-program>, or
2. Call **Alcatel** US Customer Support at 1-855-368-0829.

Battery Recycling (USA & Canada):

Alcatel partners with Call2Recycle® to offer a safe and convenient battery recycling program. For more information on our Battery Recycling Program, please visit the USA and Canada website at www.alcatelonetouch.us/battery-recycling and www.alcatelonetouch.ca/battery-recycling