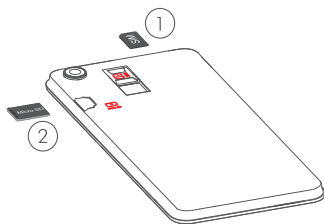
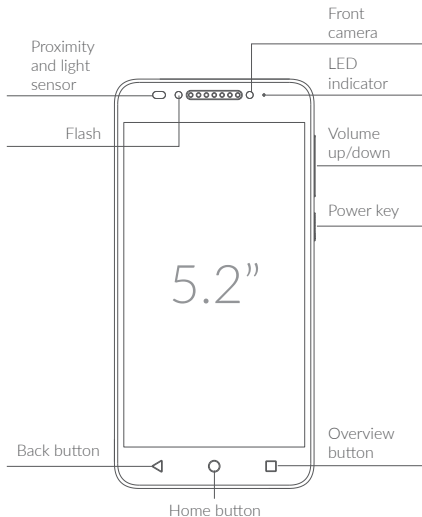
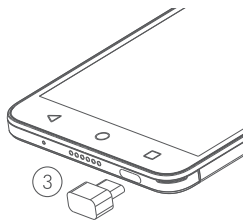


# alcatel A50™

## QUICK START GUIDE



- ① Inserting or removing the SIM card.
- ② Installing or removing the microSD card.



- ③ Charging the battery.

5085G



English - CJB29T002AAA

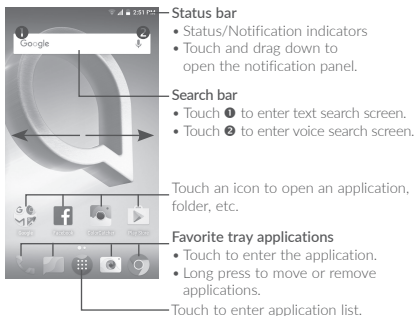
User guide and FAQ are available online  
[www.alcatelonetouch.us](http://www.alcatelonetouch.us)



PLEASE CONSIDER THE  
ENVIRONMENT BEFORE PRINTING

# 1 Home screen.....

You can bring all the items (applications, shortcuts, folders and widgets) you love or use most frequently to your Home screen for quick access. Touch the **Home** key to switch to the Home screen.



The Home screen is provided in an extended format to allow more space for adding applications, shortcuts etc. Slide the Home screen horizontally left and right to get a complete view.

## 1.1 Status bar

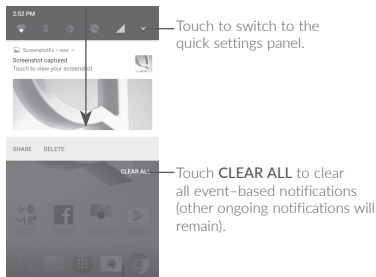
From the status bar, you can view both phone status (to the right side) and notification information (to the left side).

Drag the status bar down to view notifications and drag down again to enter the Quick Settings panel.

Touch and drag up to close it. When there are notifications, you can touch them to access notifications.

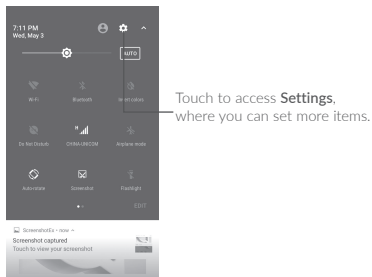
## Notification panel

When there are notifications, touch and drag down the Status bar to open the Notification panel to read more detailed information.



## Quick settings panel

Touch and drag down the Notification panel or touch **☑** to open the Quick Settings panel. You can enable or disable functions or change modes by touching the icons. Touch **EDIT** to customize your Quick Settings panel.

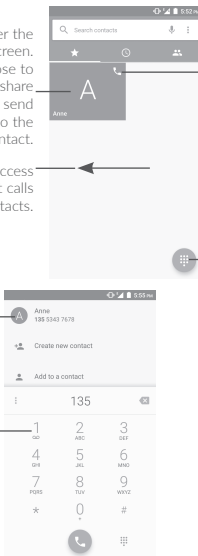


# 2 Phone call .....

## 2.1 Making a call

In either Normal or Reverse Mode, the following instructions apply in regards to making voice calls with this device.

You can easily make a call using **Call**. Touch the Application tab from the Home screen and select **Call**.



Touch to enter the contact details screen. You can choose to edit, delete, share the contact, or send a message to the contact.


Slide to access recent calls and Contacts.


Touch to call the previewed number.


Touch to display keyboard.

Display the suggested number(s).

Long press to access voicemail.

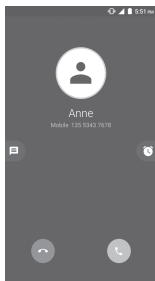
Enter the desired number from the keyboard and touch  to place the call or select a contact from **Contacts** or **Recent calls** by sliding or touching tabs, then to make the call.

The number you entered can be saved to **Contacts** by touching  and then touching .




If you dial a wrong number, you can delete the incorrect digits by touching .

To hang up a call, touch .

## 2.2 Answering or rejecting a call



When you receive a call:

- Touch the  icon to answer.
- Touch the  icon to reject.
- Touch the  icon to reject the call by sending a preset message.

To mute the ringtone volume of an incoming call, press the **Volume up/down** key, or turn the phone over (when the **Settings\ Gestures\ Turn over to mute** option is activated).



## 2.3 Consulting your call memory

You can access your call memory from the **Call** screen to view Missed calls, Outgoing calls, and Incoming calls.

# 3 Contacts.....

You can view and create contacts on your phone and synchronize these with your Gmail contacts or other applications on the web or on your phone.

## 3.1 Adding a contact

Touch  on the Home screen, then touch the  icon in the contacts list to create a new contact.

## 3.2 Synchronizing contacts in multiple accounts

Contacts, data or other information can be synchronized from multiple accounts, depending on the applications installed on your phone.

# 4 Messaging.....

You can create, edit and receive SMS and MMS with this phone. To access this feature, touch the Application tab from the Home screen, then select **Messaging**.

## 4.1 Write message

On the message list screen, touch the new message icon  to write text/multimedia messages.



- Touch to view the entire message thread.
- Long press to activate delete mode.

 Touch to create a new message.



For saved contacts, touch the photo to open the Quick contact panel to communicate with the contact. For unsaved contacts, touch the photo to add the number to your **Contacts**.

### Sending a text message

Enter the mobile phone number of the recipient in the **To** bar or touch  to add recipients. Touch the **Type message** bar to enter the text of the message. Touch the  icon to insert emoticons. When finished, touch  to send the text message.

An SMS message of more than 160 characters will be splitted up into several SMS. A counter display on the right of the text box will remind you the remaining number of characters to enter in one message.



Specific letters (accented) will also increase the size of the SMS, this may cause multiple SMS to be sent to your recipient.

### Sending a multimedia message

MMS enables you to send video clips, images, photos, animations, slides and sounds to other compatible mobiles and e-mail addresses.


An SMS will be converted to MMS automatically when media files (image, video, audio, slides, etc.) are attached or subject or email addresses are added.

# 5 Email .....





Besides your Gmail account, you can also set-up external email accounts on your phone.

To access this feature, touch the Application tab from the Home screen, then select **Email**.

An email setup wizard will guide you through the steps to set up an email account.

- Enter the email address and password of the account you want to set up.
- Touch **NEXT**. If the account you entered is not provided by your service provider in the phone, you will be prompted to go to the email account settings screen to enter settings manually. Alternatively, you can touch **MANUAL SETUP** to directly enter the incoming and outgoing settings for the email account you are setting up.
- Enter the account name and display name in outgoing emails.
- To add another email account, you can touch the  icon and **Settings**. Touch **Add account** to create.

## To create and send emails

- Touch the icon  from the Inbox screen.
- Enter recipient(s) email address(es) in the **To** field.
- If necessary, touch **Cc/Bcc** to add a copy or a blind carbon copy to the message.
- Enter the subject and the content of the message.
- Touch  to add an attachment.
- If you do not want to send the mail right away, you can touch  and **Save draft** or touch the **Back** key to save a copy.
- Touch  to send.

# 6 Getting connected.....

To connect to the Internet with this phone, you can use GPRS/EDGE/3G/4G networks or Wi-Fi, whichever is most convenient.

## 6.1 Connecting to the Internet

### 6.1.1 GPRS/EDGE/3G/4G


The first time you turn on your phone with your SIM card inserted, it will automatically configure your network service: GPRS, EDGE, 3G or 4G.

To check the network connection you are using, touch **Settings**\ **Cellular networks**, and touch **Access Point Names** or **Network carriers**.

### 6.1.2 Wi-Fi

Using Wi-Fi, you can connect to the Internet when your phone is within the range of a wireless network. Wi-Fi can be used on your phone without a SIM card inserted.

#### To turn Wi-Fi on and connect to a wireless network

- Touch **Settings**\ **Wi-Fi**.
- Touch the switch  to turn on/off Wi-Fi.
- The detailed list of detected Wi-Fi networks will be displayed on the Wi-Fi network section.
- Touch a **Wi-Fi** network to connect. If the network you selected is secured, you are required to enter a password or other credentials (you can contact the network carrier for details). When finished, touch **CONNECT**.